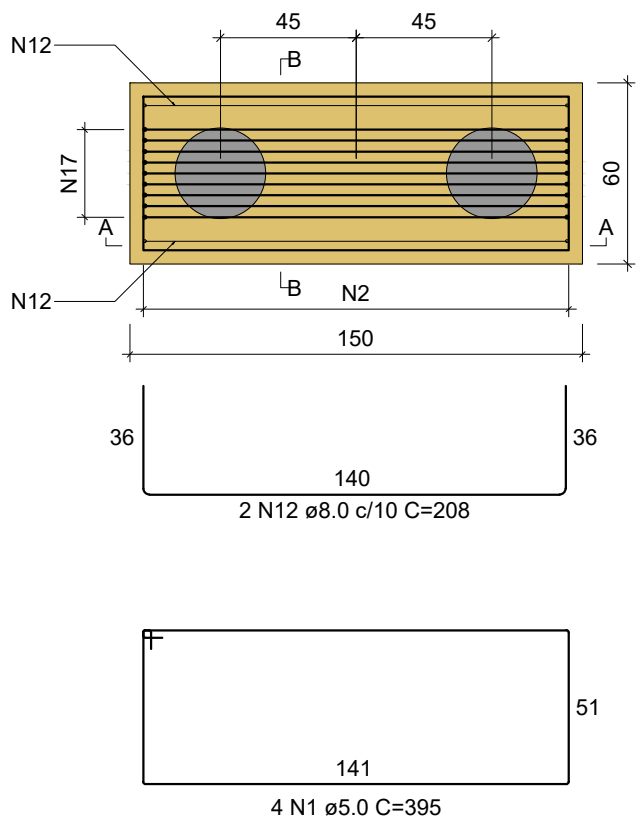
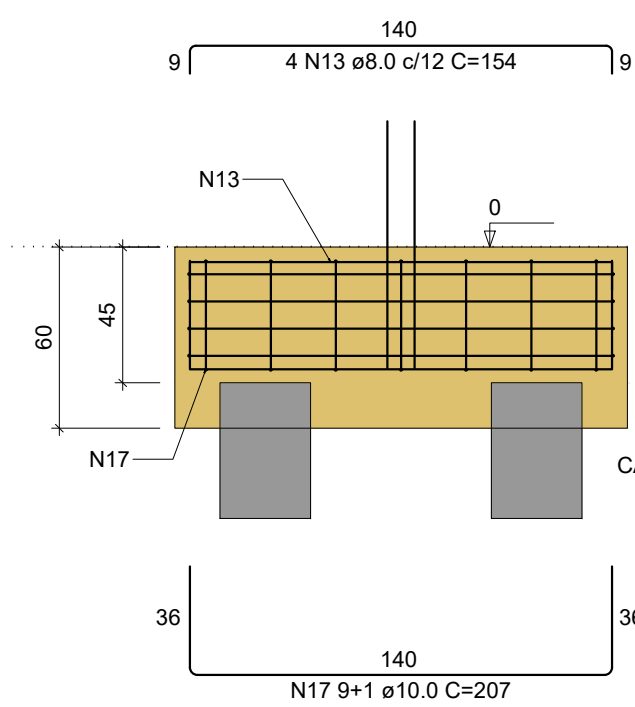


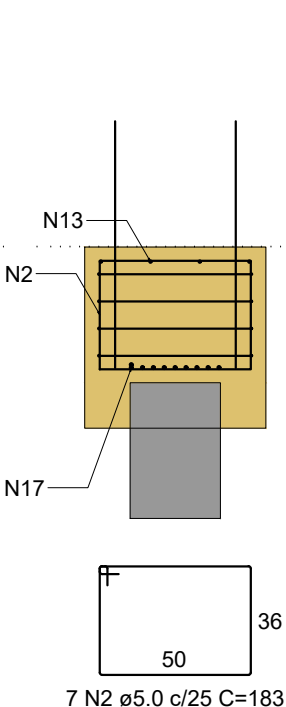
B2=B6
2xE3-D30-PR8
PLANTA
ESC 1:25



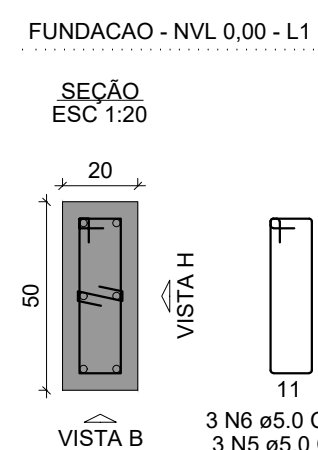
CORTE A-A
ESC 1:25



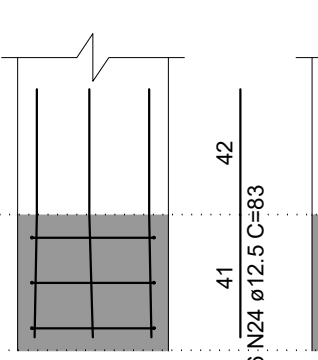
CORTE B-B
ESC 1:25



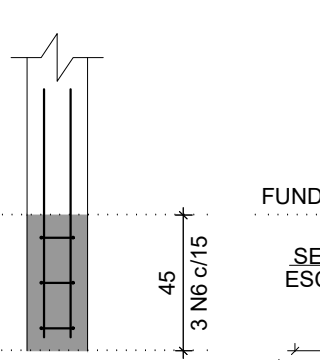
P2



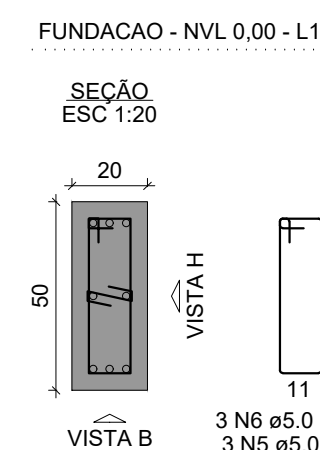
VISTA H
ESC 1:25



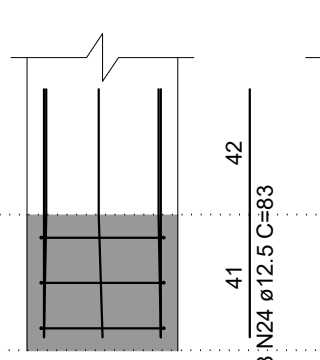
VISTA B
ESC 1:25



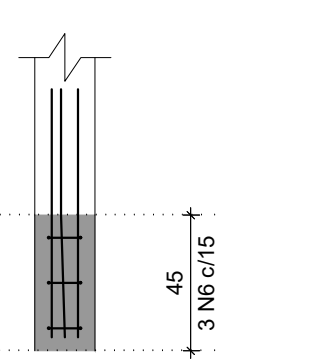
P6



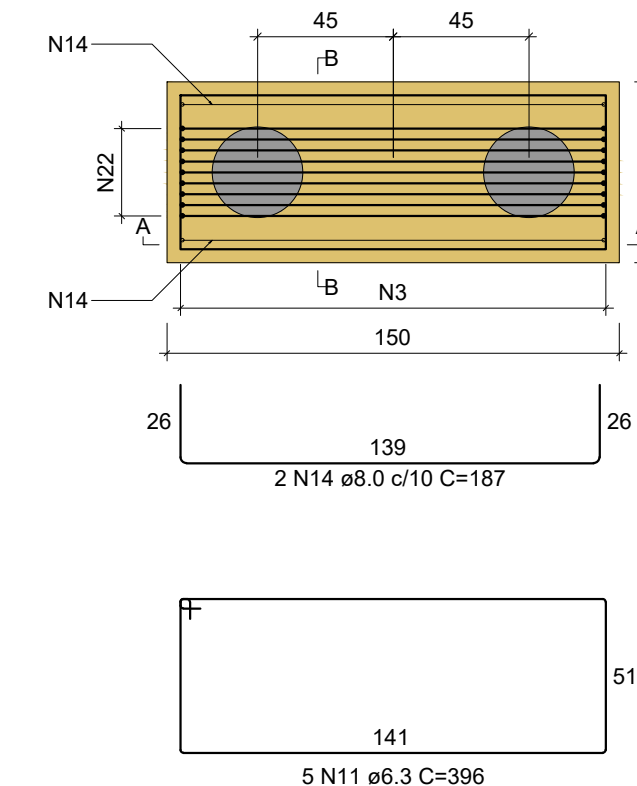
VISTA H
ESC 1:25



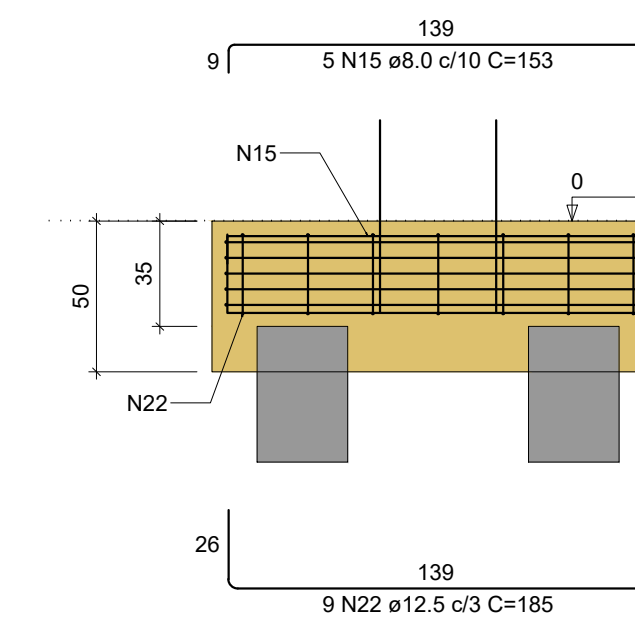
VISTA B
ESC 1:25



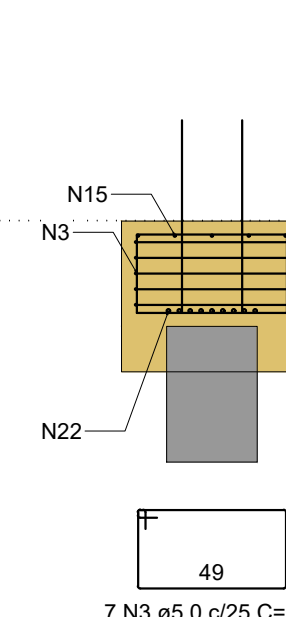
B3
2xE3-D30-PR8
PLANTA
ESC 1:25



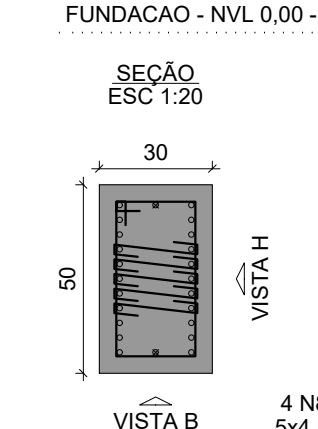
CORTE A-A
ESC 1:25



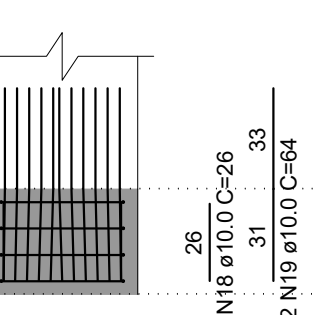
CORTE B-B
ESC 1:25



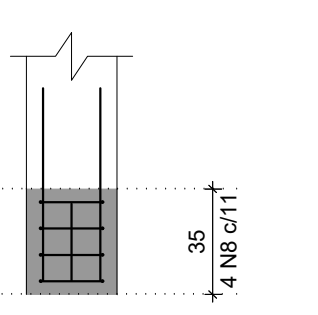
P3



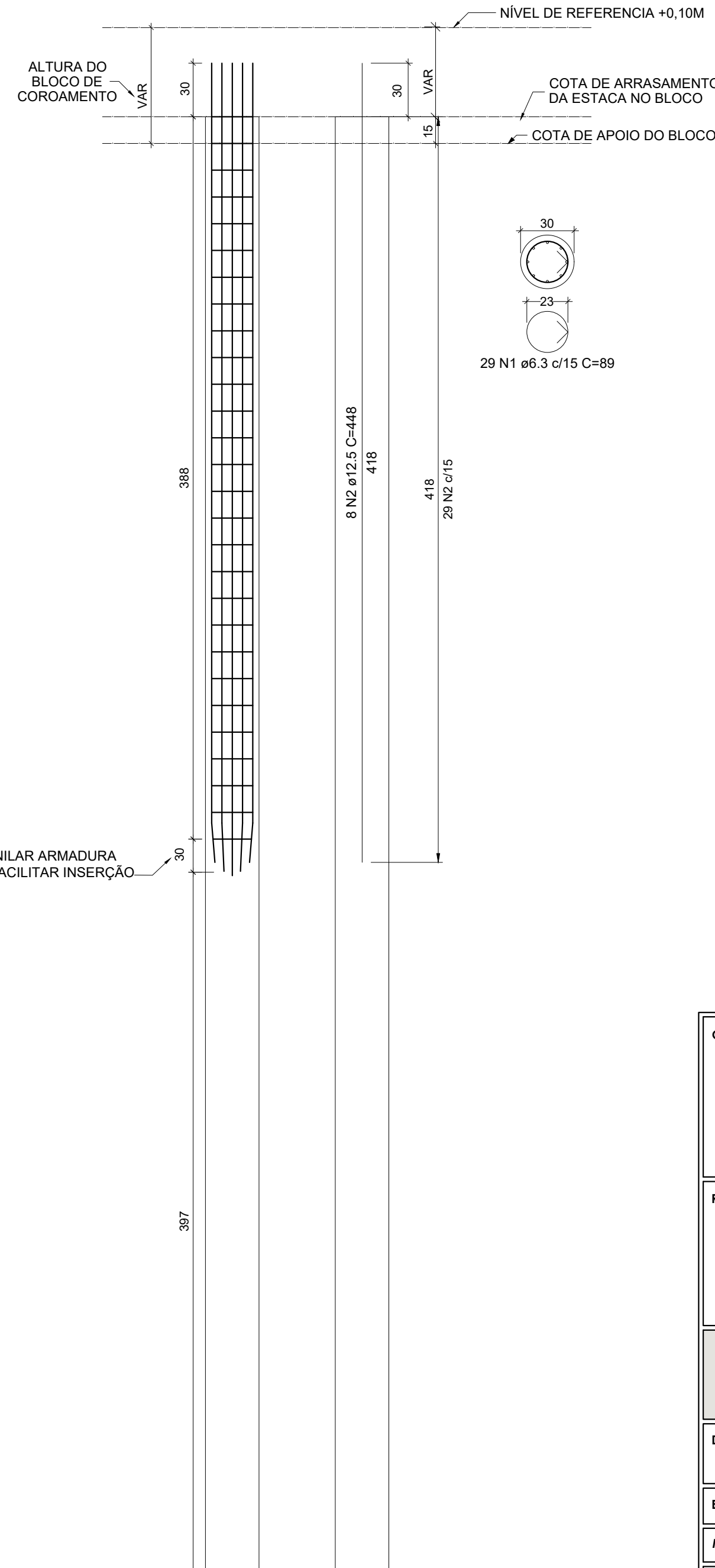
VISTA H
ESC 1:25



VISTA B
ESC 1:25



E3-D30-PR8 x 12



RELAÇÃO DO AÇO DOS BLOCOS DO NVL 00					
AÇO	N	DIAM (mm)	QUANT	C.UNIT (cm)	C.TOTAL (cm)
CA60	1	5.0	24	395	9480
	2	5.0	28	183	5124
	3	5.0	7	161	1127
	4	5.0	7	173	1211
	5	5.0	18	26	468
	6	5.0	13	115	1495
	7	5.0	20	36	720
	8	5.0	9	135	1215
	9	5.0	10	36	360
	10	5.0	16	26	416
	11	6.3	5	398	1990
	12	8.0	8	208	1664
CA50	13	8.0	20	154	3080
	14	8.0	2	187	374
	15	8.0	5	153	765
	16	8.0	2	198	396
	17	10.0	29	207	6003
	18	10.0	2	26	52
	19	10.0	22	64	1408
	20	10.0	16	69	1104
	21	12.5	8	206	1648
	22	12.5	9	185	1665
	23	12.5	7	196	1372
	24	12.5	34	83	2822
	25	12.5	4	36	144
	26	12.5	2	83	166

RESUMO DO AÇO			
AÇO	DIAM (mm)	C.TOTAL (m)	PESO + 10% (kg)
CA50	6.3	19.8	5.3
	8.0	62.8	27.3
	10.0	85.7	58.1
CA60	12.5	78.2	82.8
	5.0	216.2	36.6
PESO TOTAL (kg)			
CA50	173.5		
CA60	36.6		
Volume de concreto (C-30) = 2.98 m³			
Área de forma = 14.49 m²			

Relação do aço das Estacas do NVL 00

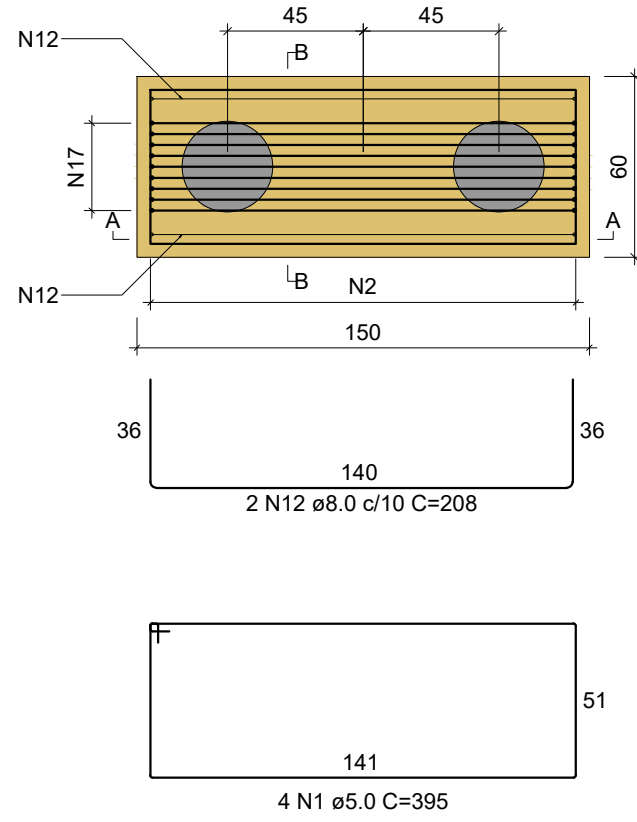
12xE3-D30-PR8					
AÇO	N	DIAM (mm)	QUANT	C.UNIT (cm)	C.TOTAL (cm)
CA50	1	6.3	348	89	30972
	2	12.5	96	418	40128

Resumo do aço

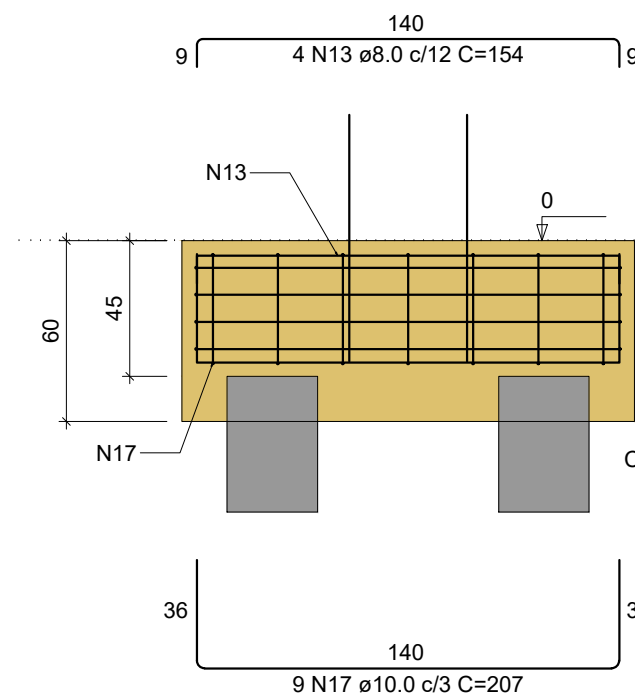
AÇO	DIAM (mm)	C.TOTAL (m)	PESO + 10 % (kg)
CA50	6.3	309.8	83.4
	12.5	401.3	425.2
PESO TOTAL (kg)			
CA50	508.6		

Volume de concreto = 6,79 m³

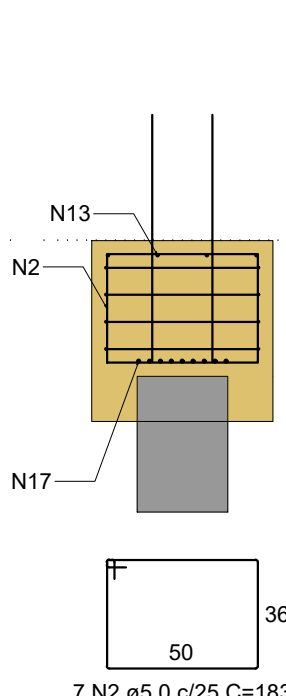
B4
2xE3-D30-PR8
PLANTA
ESC 1:25



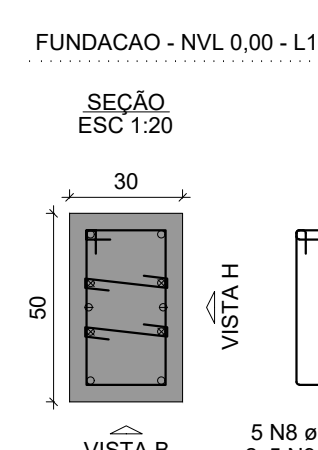
CORTE A-A
ESC 1:25



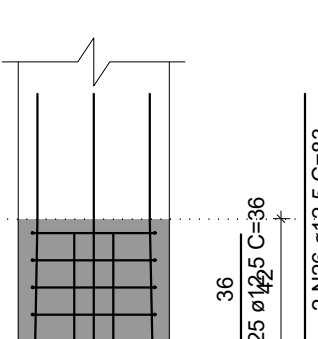
CORTE B-B
ESC 1:25



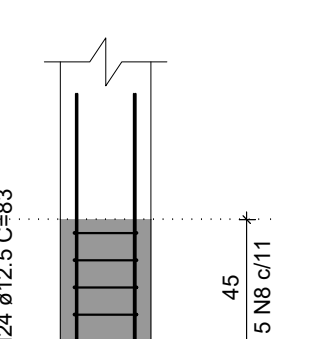
P4



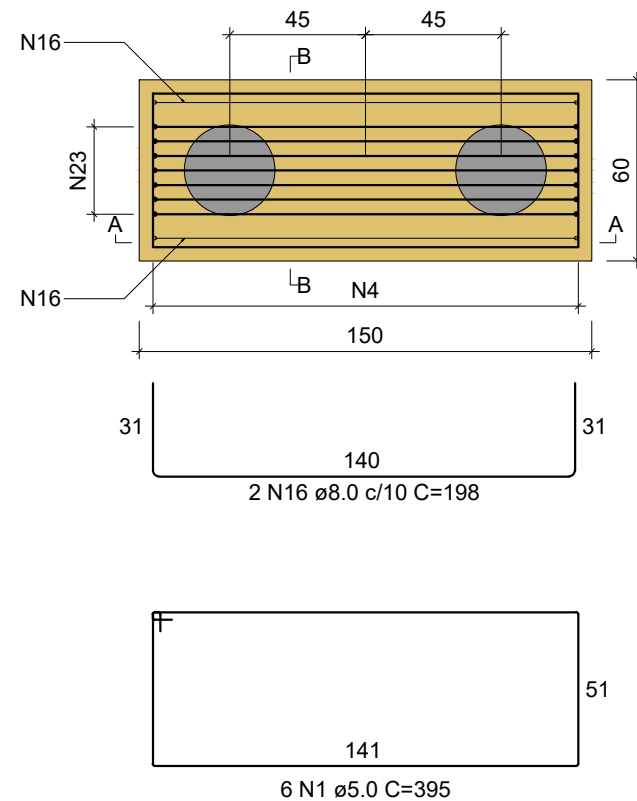
VISTA H
ESC 1:25



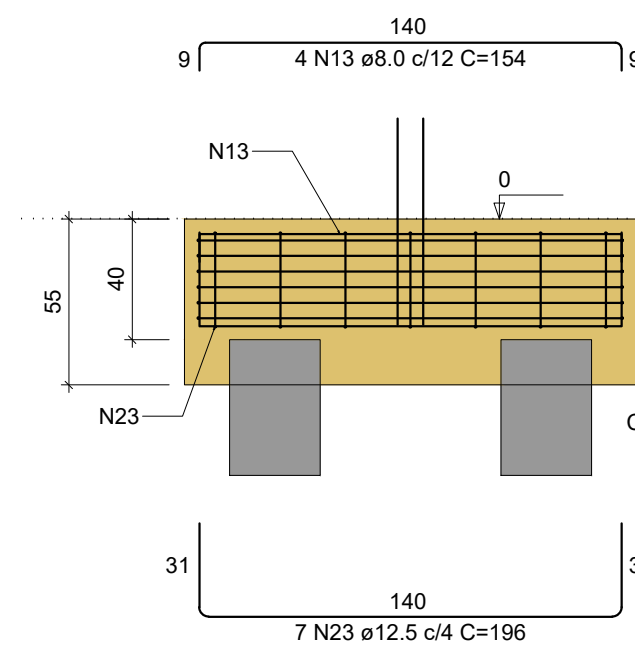
VISTA B
ESC 1:25



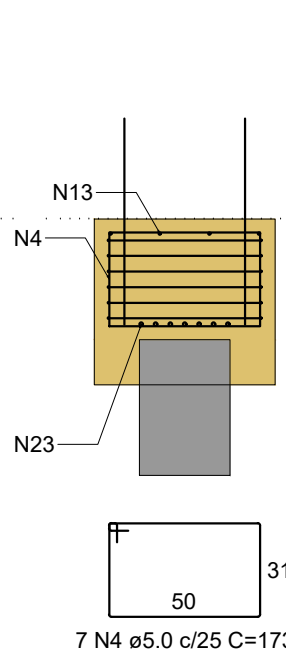
B5
2xE3-D30-PR8
PLANTA
ESC 1:25



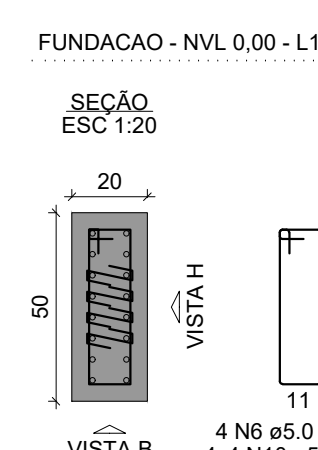
CORTE A-A
ESC 1:25



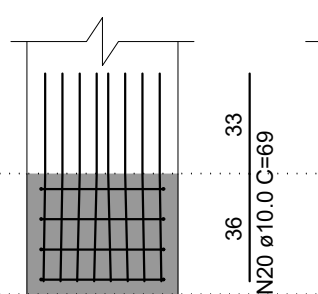
CORTE B-B
ESC 1:25



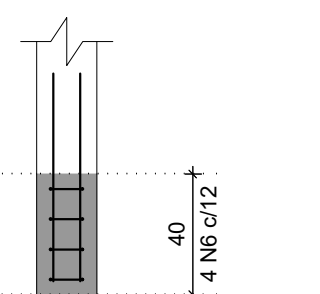
P5



VISTA H
ESC 1:25



VISTA B
ESC 1:25



CONTRATADA:	CONTRATANTE:		
 CNPJ Nº: 16.783.066/0001-35 AVENIDA MESTRA FRINHA, Nº 726 - 1ª ANDAR, CIDADE SANTA MARIA, MONTES CLAROS/MG - CEP: 37401-074	 CNPJ Nº: 22.679.153/0001-40 AVENIDA MONTES CLAROS, Nº 243 - CENTRO SÃO FRANCISCO/MG - CEP: 37300-000		
RESPONSÁVEL TÉCNICO:	RESPONSÁVEL LEGAL:		
GERALDO DIAS PEREIRA JÚNIOR CREA/CAU: 248.562/D - MG	PREFEITO(A) MUNICIPAL DE SÃO FRANCISCO		
CONSTRUÇÃO DE CASA DE BOMBAS PARA DRENAGEM DE ÁGUAS PLUVIAIS EM BACIA DE ACUMULAÇÃO NO MUNICÍPIO DE SÃO FRANCISCO-MG			
DESCRIÇÃO: DETALHAMENTO DE BLOCOS E ESTACA			
ENDEREÇO DA OBRA: RUA DE GESÉLIO GENEROSO, S/N, BAIRRO CENTRO, SÃO FRANCISCO-MG			
MUNICÍPIO: SÃO FRANCISCO/MG	DATA INICIAL: 21 DE NOVEMBRO DE 2023		
FASE DO PROJETO: INICIAL	ART/RTT: MG20232563002	DATA DA REV.: -	
REFERÊNCIA DO PROJETO: 2615	ESCALA: INDICADAS	Nº REVISÃO: 00	02/11

ESTRUTURAL